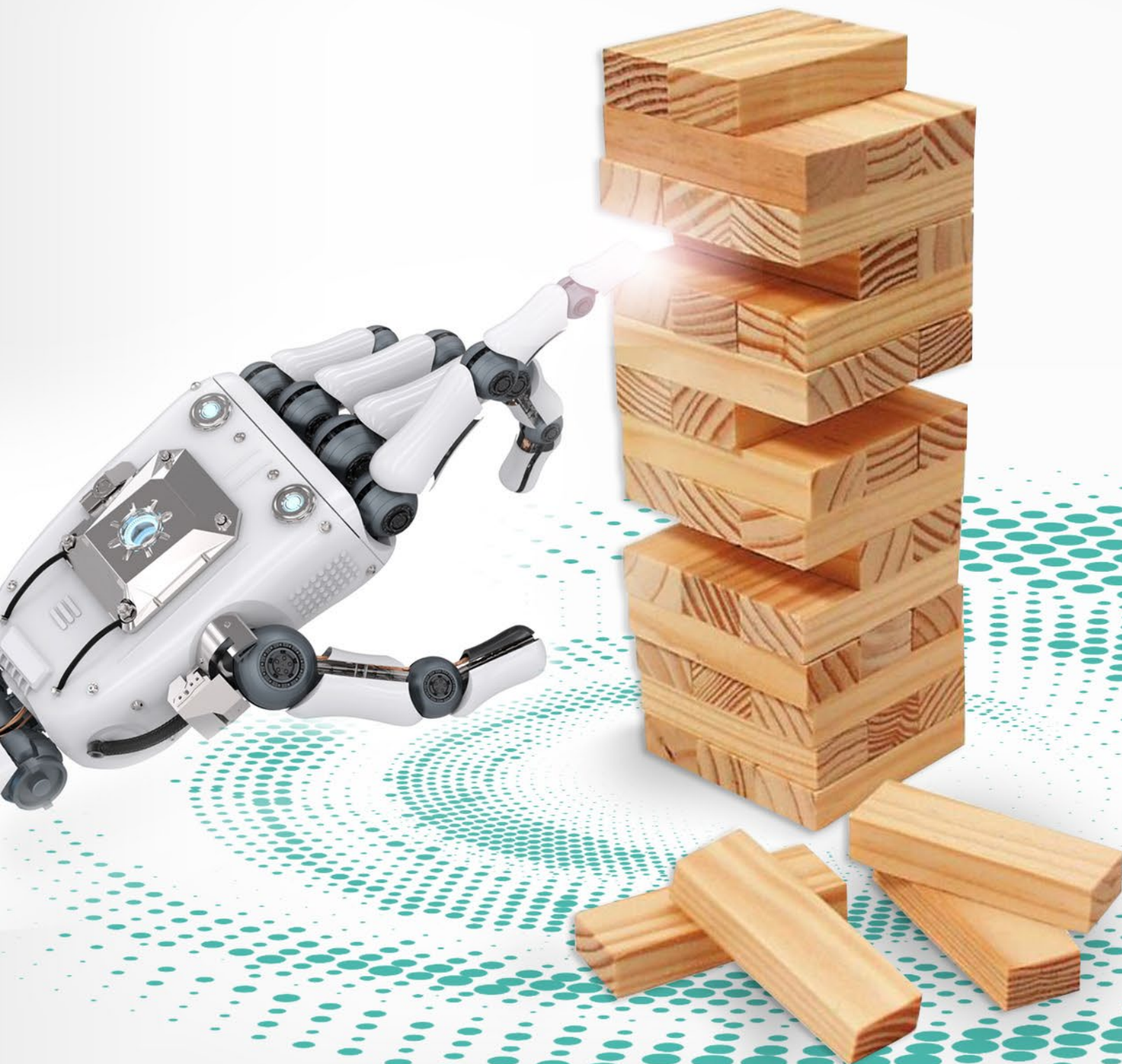
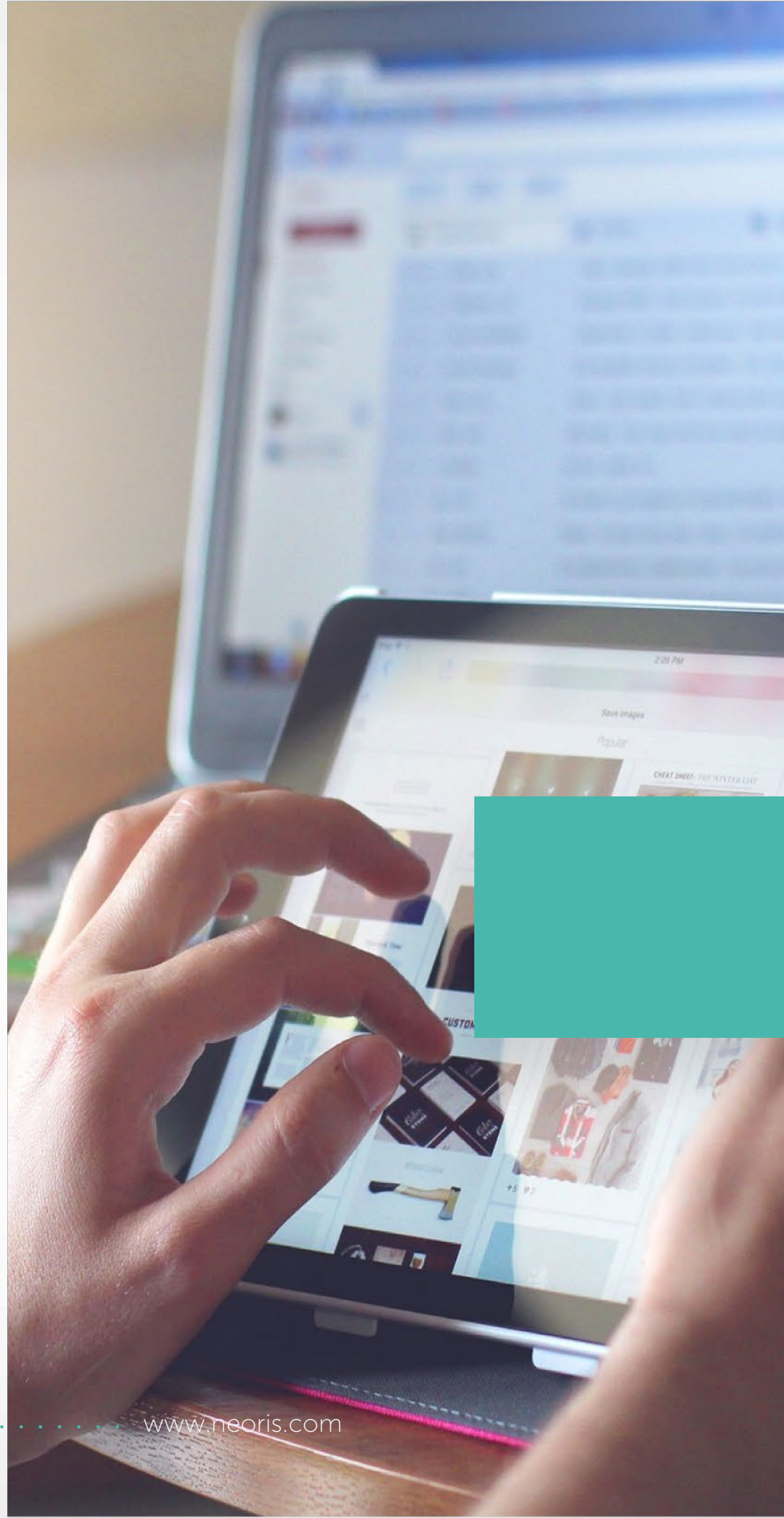


Digital Architecture

Driving a digital agenda through
architecture that enables the delivery of
new-generation services and solutions





Today, innovative business models are constantly being invented, new technologies see the light every day and customer experiences are being continually redesigned. In order to keep up, companies need to become more adaptive and agile. Digital Architecture helps to minimize the amount of decisions teams need to make in their daily activities while continuously building a creative and productive vision in the same direction.

A successful digital architecture requires deep technology knowledge, a good level of abstraction, specialized methodologies and a comprehensive understanding of our customer's business.

W H Y N E O R I S

At NEORIS Digital Architecture, we facilitate the transformation of our customers through the design of architectures that enable innovation and open up spaces for smart interactions with the ecosystem, generating value in a sustainable manner.

We can provide a thorough vision on how technology and the organization can address the challenges in any business scenario and how they can rapidly adapt to changes in the ecosystem.

Digital platforms are becoming the foundation for many new business models that are transforming our customers' revenue streams. Some new business models being introduced by the digital transformation are:

Platform models: a company makes money from linking a supplier of products or services to their customers.

Modular models: companies offer plug-and-play products that adapt to a variety of ecosystems, such as payment services.

Intellectual property models: companies bring in revenue from selling functionality or data, usually through APIs.

Because digital platforms are now global, have no boundaries, and can reach anyone, these new models pose new challenges and they need to be supported by the proper digital architecture.

Digital architecture needs to create a balance for platforms to be fast, agile and flexible and at the same time, long lasting.

With a pragmatic approach and a holistic vision, we design solutions to business problems by leveraging technology to tackle challenging business processes and practices, ensuring we address stakeholders' concerns.